

The Barn Players Proudly Present

August: Osage County

By Tracy Letts

May 30 – June 15, 2014

Directed by **Darren Sextro**

Presented through special arrangement with Dramatists Play Service, Inc.

AUGUST: OSAGE COUNTY premiered in June 2007
at Steppenwolf Theatre Company in Chicago, IL,
Martha Lavey, Artistic Director; David Hawkanson, Executive Director.

Steppenwolf's production of AUGUST: OSAGE COUNTY opened on Broadway
at the imperial Theatre on December 4, 2007. It was produced by Jeffrey Richards,
Jean Doumanian, Steve Traxler, Jerry Frankel, Ostar Productions, Jennifer Manocherian,
The Weinstein Company, Debra Black/Daryl Roth, Ronald & Marc Frankel/Barbara Freitag,
and Rick Steiner/Staton Bell Group.

Stage Manager
Betsy Sexton

Assistant Director
Christina Schafer

T. D./Lighting Designer
Chuck Cline

Sound Designer
Sean Leistico

Set Designer
Frank Polleck

Asst. Stage Manager
Lynn Reddick

Properties Designer
Rhonda Wickham

Graphic Designer
Alex Morales

Set Construction Assistant
Roy Peck

There will be two ten-minute intermissions.

The use of any type of recording device during the performance is strictly prohibited.
Please silence all cell phones and other electronic devices.
Thank you, and enjoy the show.

If you like our production, you can rate and/or review it on KC STAGE
<http://www.kcstage.com>.

The Chestnut Fine Arts Center



Bob and Bing
May 15 - June 22
 The music and humor of Bob Hope & Bing Crosby! (G)



Amazing Grace
July 10 - Aug 24
 Gospel and spiritual favorites! (G)



Go in' to the Chapel
Oct 30 - Dec 14
 A FUN & PEPPY stroll back to the fab 50's! (G)

Our 2014-2015 Theatre Season Was Recently Announced! Call for YOUR Season Tickets NOW!
913-764-2121

YOUR Destination For Great Family Entertainment!

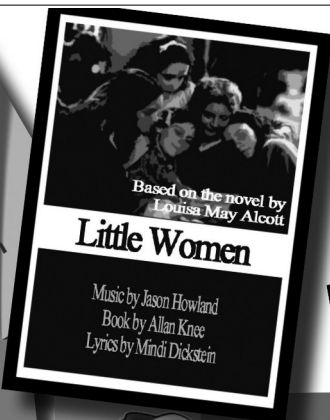


Call 913-764-2121 For Info & Reservations

www.chestnutfinearts.com

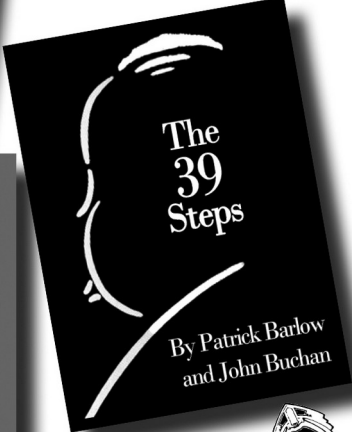
- 2014 - 2015 SEASON**
- Looking Over the Presidents Shoulder* Sept 11 - Oct 19
 - Go in' to the Chapel* Oct 30 - Dec 14
 - Always a Bridesmaid* Jan 22 - Mar 8
 - Good Old Mountain Music* Mar 19 - May 3
 - Church Basement Ladies* May 21 - June 28
 - Forbidden Broadway* July 16 - Aug 30

COMPANY
 Music and Lyrics by Stephen Sondheim
 Book by George Furth

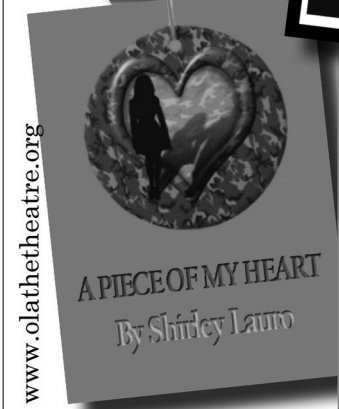


Little Women
 Based on the novel by Louisa May Alcott
 Music by Jason Howland
 Book by Allan Knee
 Lyrics by Mimi Dickstein

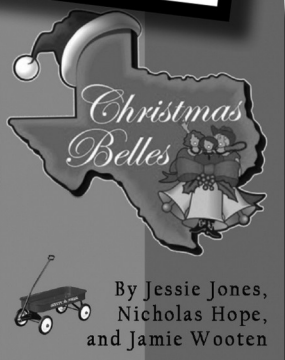
2013-2014 Olathe Civic Theatre Association



The 39 Steps
 By Patrick Barlow and John Buchan



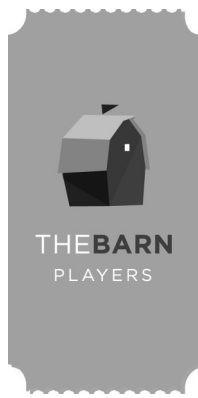
A PIECE OF MY HEART
 By Shirley Lauro



Christmas Belles
 By Jessie Jones, Nicholas Hope, and Jamie Wooten

www.olathetheatre.org





The Barn Players Board of Directors

Vida Bikales , President	Cecelia Baty , Secretary
Eric Magnus , Artistic Director	Traci Christian
Lynn Reddick , Assistant Artistic Director	Michelle T. Johnson
Eric Van Horn , Vice President	Ann Marie Oesterle-Siegwarth
Pam Craven , Volunteer Coordinator	Steve Sears
Maneesh Jhunjhunwala , Treasurer	

Advisory Board

Damron Russel Armstrong	Frank Robertson	Mandy Harkleroad
Beate Pettigrew	Nancy Wallerstein	Martha Risser

Operations Staff

Jason Coats, Education Coordinator
Meghan Newman, Administrative Coordinator
Sean Leistico, Facility Technician, Webmaster, Program Designer
Pat Paton, Public Relations

Additional rehearsal facilities provided by **St. Pius X Church, Misison, KS.**

Special Thanks to **Mainstreet Credit Union** for their generous support.

The Barn Players would like to thank **Mark Gilman** and **Gill Studios** for their generous contributions and assistance



Check Out Our **Website**: <http://www.thebarnplayers.org/>

Subscribe To Our **Newsletter**:

<http://groups.google.com/group/the-barn-players-community-theatre/>

Like Us On **Facebook**: <http://www.facebook.com/thebarnplayers>

Follow Us On **Twitter**: [@KsBarnPlayers](https://twitter.com/KsBarnPlayers)

JCCC's Department of Music and Theatre

invites you to join us on campus for:

[title of show]

Oct. 3-5 and Oct 10-12,
Bodker Black Box Theatre

An Experiment with an Air Pump

Nov. 14-16 and Nov. 21-23, Polsky Theatre

Marcus is Walking

Feb. 20-22 and Feb. 27-March 1,
Bodker Black Box Theatre

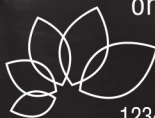
El Tiburón: A Made Up Cuban Folk Story

March 13-15, Bodker Black Box Theatre

A Midsummer Night's Dream

April 24-26 and May 1-3, Polsky Theatre

For more information, call 913-469-3245
or visit www.jccc.edu/theatre.



**JOHNSON COUNTY
COMMUNITY COLLEGE**

12345 College Blvd | Overland Park, KS

Dead Man's Cell Phone, JCCC, 2013

Cooperative Sponsor

“THROUGH OUR CHILDREN’S LIVES”

A 501-c-3 not for profit resale shop

Dedicted to and providing free clothing and household items.to those adults
and children coming from domestic abuse situations

OPEN TO THE PUBLIC OFFERING GENTLY WORN, OR NEW CLOTHING
FOR ALL AGES, PLUS HOUSEHOLD ITEMS AT SPECIAL PRICES.

A PARADISE FOR THRIFTY SHOPPERS.

Donations of gently worn clothing, household items and funds are Tax deductible

6709 West 75th Street / Overland Park, KS / 913-381-2544

Monday through Saturday 10:00 until 6:00

(Second Sunday special ½ off day)

Setting

A large country home outside Pawhuska, Oklahoma, sixty miles northwest of Tulsa.
August, 2007

Cast

(In Order Of Appearance)

Beverly Weston.....	John Rensenhouse*
Johnna Monevata.....	Jennifer Coville
Violet Weston.....	Anita Meehan
Mattie Fae Aiken.....	Pam Haskin
Ivy Weston.....	Elizabeth Hillman
Charlie Aiken.....	Greg Butell
Barbara Fordham.....	Barb Nichols
Bill Fordham.....	Eric Magnus
Jean Fordham.....	Courtney Desko
Sheriff Deon Gilbeau.....	Trevor French
Karen Weston.....	Stasha Case
Steve Heidebrecht.....	Tim Ahlenius
Little Charles Aiken.....	Michael Bunn

*appears courtesy of AEA Special Appearance Agreement

Acknowledgements

Original song used in Act 2 composed by Michael Bunn

Special Thanks to our media partners in the community:



Cumulus Media Stations serving the Kansas City Metropolitan Area

Moss Printing
MOSSPRINTING.COM

250

BUSINESS CARDS

JUST \$25

(Self service through website only)
MOSSPRINTING.COM

CLICK TO ORDER

5406 Johnson Drive
913-362-9292



Funny Name, Serious Sandwich! **SCHLOTZSKY'S!**

6350 Johnson Drive,
Mission, KS 66202
913-432-1724



Respectful, professional, direct cremation services

- *Family owned and operated*
- *No membership fee*
- *No pre-registration or prepayment required*
- *Available 24 hours a day, seven days a week*

4926 Johnson Drive, Shawnee Mission, KS 66205

913-384-5566

www.CremationCenterKC.com



Tim Ahlenius (Steve Heidebrecht) originally hails from southeast Kansas. He has worked professionally in Georgia, Alabama, Colorado and Kentucky. Locally, he has performed with The Coterie Theatre, Metropolitan Ensemble, Martin Tanner Production, the KC Rep, and The Living Room Theatre, where is a proud member of its Board. Tim runs his own contracting business, Timmy Do List Handyman Services. He thanks his wife, Paige and his wonderful kids, Hannah, Audrey and Gabe for all their support! And he thanks you for supporting local theatre!



Michael Bunn (Little Charles Aiken) is proud to be performing in his first full-length show with The Barn Players, having previously performed with Olathe Civic Theater Association and The Bell Road Barn. His most fun role to date was Millet in *Fuddy Meers* at OCTA, where he played opposite a psychotic puppet. August: Osage County is one of Michael's favorite plays and he feels fortunate to be a part of this cast and work with this creative team. Thank you to Michael's friends and family for their continued support. A special thank you goes to Elizabeth Hillman for her creative partnership in this endeavor.



Greg Butell (Charlie Aiken) is excited to be working on this show with such an amazing cast and staff! Greg's past credits at the Barn Players include *The Drowsy Chaperone*, *Assassins*, and *Closer*, and he just finished portraying Atticus Finch in *To Kill a Mockingbird* at the JCC White Theatre. Last fall, Greg performed in a production of *ART* at Ouray, Colorado's Wright Opera House. Greg has been performing in KC Theatres for 25+ years now including Barn Players, JCC White Theatre, OCTA, Chestnut Fine Arts, MET, KC Rep, American Heartland Theatre, and New Theatre Restaurant.



Stasha Case (Karen Weston) has previously appeared at the Barn in *Curtains*, *Bat Boy*, *Urinetown*, *Company* and *Little Shop of Horrors*. Other venues include the American Heartland Theatre, The Unicorn, Chestnut Fine Arts, The White Theatre, OCTA, Horsehead Productions, Theatre in the Park, Late Night Theatre and Full Frontal Comedy. Stasha has worked at Prosperity Advisory Group financial planning firm for 20 years. She is grateful for this phenomenal cast, staff and crew, and for the support of friends and family, especially Bill! Look for Stasha as Bo Dyke in Late Night Theatre's upcoming all female cast of *The Dykes of Hazzard*.



Jennifer Coville-Schweigert (Johnna Monevata) is extremely excited to be returning on stage for The Barn Players. Jennifer is originally born in New York, but has lived in the Kansas City area long enough to call it home. She will always be a New York Giants fan though! She has done numerous productions in and around the Kansas City Area, including many commercials and independent films. Her most notable roles include Velma Kelly in *Chicago*, Audrey in *Little Shop of Horrors*, Adelaide in *Guys and Dolls*, Mimi in *Rent*, Callie in *Stop Kiss*, Annie Oakley in *Annie Get Your Gun*, Martha in *The Children's Hour*, Evelyn in *The Shape of Things*, Lucy in *You're a Good Man, Charlie Brown* and Bessie in *Marvin's Room*. She would like to thank Darren for giving her this opportunity to be a part of such an amazing production with an amazing cast and crew, her ever-supporting family, her loving wife and daughter, and everyone for continuing to support the arts.



Courtney Desko (Jean Fordham) is thrilled to take to the Barn stage for the very first time. A graduate of Stephens College, this is her Kansas City debut. Some favorite past roles include Claire in *Boston Marriage* (Stephens College), Louanne in *Book of Days* (Okobojo Summer Theatre) and Isabelle in *The Liar* (Okobojo Summer Theatre). Desko would like to thank this cast for all the laughs, Darren for the opportunity, and her friends and family for their continued support.



Trevor A. French (Sheriff Gilbeau) is thrilled to be a part of *August: Osage County*. Trevor has been performing in Kansas City for over 11 years in several different theatrical venues. Barn credits include Christopher Belling in *Curtains*, Gangster in *The Drowsy Chaperone*, and Leon Czolgosz in *Assassins*. It is an experience of gratitude to be a part of this show. He would like to thank this wonderful cast and staff for such an amazing experience.



Pam Haskin (Mattie Fae Aiken) is thrilled to be back on The Barn stage, having previously appeared here in *Dangerous Liaisons*, *Prelude to a Kiss*, *Urinetown*, *Wonder of the World* and *The Secret Garden*. She has also appeared with Metropolitan Ensemble Theatre, Chestnut Fine Arts Center, Olathe Community Theatre, Wyandotte Players, and Sonlight Productions. Pam is extremely excited to work with great friends in telling this brilliantly written story. Thanks to Darren for his insight and imagination, and for surrounding himself with such an organized, talented and dedicated staff. Much love to Mike who makes this all possible.



Elizabeth Hillman (Ivy Weston) is terribly happy to be making her Barn Players debut with this extraordinary director, cast and crew. Previous local credits include Lisa in *Devoured by Tigers*, part of the last year's Fringe Festival, Val in *The Weir* produced by Martin Tanner Tuesdays and *Romeo & Juliet* with She & Her Productions. Other favorite regional credits include Helena, Beatrice and Klara in the world premiere of *Teshuvah*. Undying gratitude to my friends and family who have been phenomenally supportive of my theatrical endeavors.



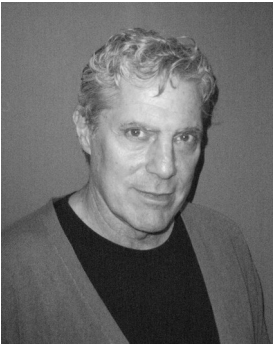
Eric Magnus (Bill Fordham) Eric is proud to return to The Barn stage this season, having last been seen as The Chairman in *The Mystery of Edwin Drood*. His most recent stage appearances include Man in Chair in *The Drowsy Chaperone* at The Barn, *The Hallelujah Girls* at The Chestnut theatre, *Urinetown* at Theatre in the Park and *Titanic* for Leawood Stage Company. Erin has been the Artistic Director at The Barn Players since 2008, and most recently directed the acclaimed productions of *Follies* and *Spring Awakening*. He is also the Director of Theatre at Frontier Trail Middle School in Olathe and a private acting coach. A special thanks to Darren and the production staff of *August: Osage County*, Lynn Reddick, Vida Bikales and the board of The Barn for their incredible support and encouragement. It was an absolute joy to work with this amazingly talented group of actors. Love to Michael, friends and family for their continuing support.



Anita Meehan (Violet Weston) is excited (translate: myriad of emotions) to be performing in her fourth show at The Barn. Anita hails from St. Joseph where she is a full-time hospice social worker and a part-time substance abuse counselor. Anita previously appeared in *Follies*, *Dangerous Liaisons* and *Prelude to a Kiss* here at the Barn, as well as shows in St. Joseph, Parkville and Riverside. Thank you to the cast and crew, especially Darren, for their hard work, support and “fellowship” during this process. You are each wonderful!



Barb Nichols (Barbara Fordham) Barb is happy to be on the other side of the boards for this production. Past acting roles include *Joseph and the Amazing...* and *Godspell* at the Chestnut Fine Arts Theatre. She has also directed shows around Kansas City including *Company* and *Les Mis* at the JCC, *Chess*, *The Drowsy Chaperone*, *Dirty Rotten Scoundrels*, *The Secret Garden*, *Bat Boy*, *A New Brain* and *Urinetown* at The Barn Players as well as productions at Theatre in the Park including *Oklahoma!*, *1776*, *Beauty and the Beast* and *Evita*. She thanks, as always, Chris, Stephen and Evan their love and support.



John Renshouse (Beverly Weston) began his career many moons ago in 1975 here at the Barn Players, playing Starbuck in *The Rainmaker*. Since then he has performed at many of the country's largest and most prestigious theatres, including The Oregon Shakespeare Festival, Hartford Stage, Cincinnati Playhouse and the Repertory Theatre of St. Louis. He has toured nationally with the Broadway productions of *The Lion King* and *Noises Off* and, here at home, has portrayed major roles ranging from Atticus Finch in *To Kill a Mockingbird* at the Kansas City Rep to Macbeth in *Macbeth* at the Heart of America Shakespeare Festival. He serves as the Managing Director of Kansas City Actors Theatre and directed their production of *Long Day's Journey Into Night*, which was cited as the Best Play of 2013 by the Kansas City Star. Many thanks to Darren Sextro for taking a chance on him!

Also This Summer At The Barn...

2014 SEASON

Session 1 +
JUNE 17-19
Directed by DIANE BULAN

Session 2
JULY 22-24
Directed by JASON COATS

Disney
Cinderella
KIDS

Music and Lyrics by
MACK DAVID, AL HOFFMAN and
ERRY LIVINGSTON
Book Adapted and Additional Lyrics by
MARCY HEISLER
Music Adapted and Arranged by
BRYAN LOUISELLIE
Based on the Screenplay by
KEN ANDERSON and
HOMMER BRIGHTMAN

THE BARN
PLAYERS

ALL SEATS: \$5.00 | ALL SHOWS: 7:30 P.M.
THEBARNPLAYERS.ORG

913-432-9100
6219 MARTWAY • MISSION, KANSAS 66202

f /THEBARNPLAYERS t @KSBARNPLAYERS

Our Barn KIDS Summer Productions!

We'll Help You
**TAKE HOME A
GREAT
WINE**



Mary and Marshall Rimann

RIMANN
LIQUORS

IN THE COUNTRY HILL CENTER
87TH & LACKMAN • LENEXA
913-492-1604

IN THE PRAIRIE VILLAGE SHOPS
TOMAHAWK & MISSION ROAD
913-236-5311

www.RimannLiquors.com

Special Thanks to our 2014
Season Flex Pass Patrons:

Bob & Petra Allen
Shelly Stewart Banks
Cecelia & Bruce Baty
Vida Bikales
Desi Bravo
Chip & Deborah Buckner
Wendy Budetti
Ron & Dianne Coats
D.K. Evenson
Beverly Godwin & Mike Roberts
SueAnn Heim
Nancy Kindred
Stu Lewis
Maureen McGinty
Barbara Nichols
Bud & Melanie Nolker
Michael Ong
Adam Pankratz
Jose Ramirez
Karen Rausch
Jim Schriock
Darren Sextro
Sam Shryock
Jim Stamberger
Phil Stevens
Henry Temchin
Lee Trowbridge
Nancy & Ed Wallerstein
Roberta Wilkes
Chris & Marsha Wilson

Production Staff

Chuck Cline (Production Manager, Lighting Designer) *August: Osage County* is Chuck's 13th overall production with The Barn Players. It was 10 years ago that Chuck worked on his first Barn production as Lighting Designer for *Fuddy Meers*. Since then, Chuck has served as lighting designer, actor and musician, and is thrilled to be serving as Technical Director for this production. Chuck would like to thank David Addison and the entire cast and crew for their hard work and dedication. Thank you for choosing to spend your evening/afternoon with us!

Sean Leistico (Sound Designer) This is Sean's sixty-first production, either onstage or as a designer/techie, with the Barn Players since 2004 (just ask - he has a list.) In addition to his work as resident sound engineer, facility technician, webmaster and general whatever-needs-done guy at the Barn, his "day job" is scene shop foreman at Johnson County Community College in the Department of Music and Theatre, where he also appeared recently as Dr. McSharry in *The Cripple of Inishmaan* and as Baylor in *A Lie Of The Mind* in the past academic year.

Frank Polleck (Set Designer) is currently technical director for the Performing Arts Association, Robidoux Resident Theatre, St. Joseph Symphony, and has been the technical director for CAP for more than 30 years. Frank won third place in the nation for his set design on RRT's production of *To Kill a Mockingbird* and a National Award for Light Design for *Peter Pan* in 2009. Frank is also the technical director and stage designer for the Miss Missouri, Miss Kansas, Miss Oklahoma, Miss Nebraska and Miss Arkansas pageants. Frank has been awarded the Mayor's Individual Artist Award. He recently designed the set for OCTA's *Crimes of the Heart* and was excited to win a Buddy Award for his work on that production.

Lynn Reddick (Assistant Stage Manager) is thrilled to be a part of this dedicated production team and amazingly talented cast. Lynn has been involved with numerous Kansas City area community theatres over the last 25 years. At present, he serves on the Board of Directors and is the Assistant Artistic Director of the Barn Players. To support his theatre habit, Lynn works as a Data Architect at Sprint. This one is for little Sebastian --- welcome to the world!

Production Staff

Christina Schafer (Assistant Director) is very excited to be back at The Barn Players for another fantastic production. Onstage credits at The Barn include Madame de Tourvel in *Les Liaisons Dangereuses*, Rita in *Prelude to a Kiss*, Evelyn in *The Shape of Things* and others. Christina has been on the crew for productions with the JCC, Moving Target and OCTA. She has performed onstage with all of those theatres, as well as KCAT and Metropolitan Ensemble Theatre. Thank you, Darren, for helping me stay busy.

Betsy Sexton (Stage Manager) has directed and/or stage managed at nearly all of the community theatres in the area for the past 30 years including Olathe Community Theatre, Chestnut Fine Arts, Shawnee Mission Theatre in the Park, Bell Road Barn, Summit Theatre Group, and, of course, The Barn Players. She served on the board of the Barn and was president back in the 1980's. Her most recent directing was *A Piece of My Heart* in the initial season of Summit Theatre Group and last season at OCTA. Her last work at The Barn was stage managing *Dangerous Liaisons*. She hopes you enjoy this little trip to Oklahoma where she was born – a thousand years ago.

Darren Sextro (Director) has previously directed *Les Liaisons Dangereuses*, *Prelude to a Kiss* and *Wonder of the World* for The Barn Players; *To Kill a Mockingbird* for The White Theatre at the JCC; *Crimes of the Heart*, *Our Town*, *Doubt: A Parable*, *The Glass Menagerie*, *For Whom the Southern Belle Tolls* and *The Diary of Anne Frank* for OCTA; 'ART' for The Wright Opera House (Ouray, CO), *The House of Yes* for The Fishtank; *Harvey* for Bell Road Barn; and Harold Pinter's *Old Times* reading for KCAT. He has worked as an actor all over town in numerous plays and musicals. He is a past Board member of Kansas City Actors Theatre and a current Board member of the Heart of America Shakespeare Festival. Next up, he will direct *Crimes of the Heart* for Kansas City Actors Theatre's tenth anniversary season, as well as *God of Carnage* for both OCTA and The Wright Opera House in 2015.

Rhonda Wickham (Props Mistress) Rhonda is honored to be working with such a talented cast and crew for *August: Osage County*, many of whom she has worked with on past shows. These shows include *Prelude to a Kiss*, *A Piece of my Heart*, *Crimes of the Heart* and *Dangerous Liaisons*.

The heart of any community theatre is its base of volunteers, contributors, and sponsors. That means your support is absolutely essential to our mission of providing quality theatre for our community. That's why we hope you'll participate in our newest fundraising effort and become a friend of The Barn Players Theatre, using any of these six "Friends" categories:

BENEFACTOR (\$1,000 and up)

ANGEL (\$700 - \$999)

PATRON (\$400 - \$699)

STARRING ROLE (\$150 - \$399)

CHORUS (\$50 - \$149)

FAN (\$25 - \$49)

Please help support The Barn Players! Your donation/gift is completely tax deductible and directly supports our efforts to bring you the very best in local community theatre. The Barn Players thank all who have donated and supported our efforts to produce quality community theatre.

Benefactors

Vida Bikales

Guy Gardner/Worlds Of Fun

Mark & Nancy Gilman

NEJC Chamber Of Commerce

Barb & Chris Nichols

Pfizer Foundation Volunteer Program

John Rensenhouse

Stephen Sears & John Lavyssen Fund

Patron

Michael Ong

Darren Sextro

Starring Roles

A Friend Of The Barn

Bob & Petra Allen

Corinne & Jon Bakker

Chip and Deb Buckner

International House of Music

Adam & Sara McAdoo

Kay Noonan

Rich Pauli & Rosemary Hartigan

Beate and Thomas Pettigrew

Pfizer Foundation Matching Gifts

Lynn Reddick

Chorus

Marie Asner

J. Kent Barnhart & Brian C. McGinness

Jared Humphrey

John Brunk and Patricia Leathers

Adrienne Kilbride

Robert & Kaye Martin

Maureen McGinty

John & Pamela Peck

Jose Ramirez

Teresa Tweedie

Nancy Wallerstein

Chris & Marsha Wilson

The Cast of "Shrek"

Fans

Sara Crow & Craig Aikman

Cat Heisler

Carrie & Patrick Lenahan

Eric Magnus

Jeanne Markey in honor of Cecelia & Bruce Baty

The July Barn KIDS Parents

Coming to the The Barn Players in 2014

DISNEY'S CINDERELLA, KIDS

(A Barn Kids Production)

Session 1: June 17 - 19, 2014

Session 2: July 22 - 24, 2014

NOISES OFF

July 18 – August 3, 2014

BARN BENEFIT 2014: CLOSER THAN EVER

August 15 - 17, 2014

HAIR

September 19 – October 5, 2014

LA CAGE AUX FOLLES

November 7 - 23, 2014

THE 7th ANNUAL 6 X 10: Original Ten-Minute Play Festival

December 12 – 14, 2014

Now available: Barn Season Flex Passes

Our Season Tickets are now called a “Season Flex Pass” and may be purchased throughout the year. They are still good for six shows for the price of five and all the other perks our Season Ticket Patrons have come to expect. But the beauty of this pass is that you can use it for admission to all six shows within the calendar year or two people can come to three shows or if you want you can use your pass to see one show six times. The choice is all yours and so are the savings. The Season Flex Pass is only good for the current calendar year. Passes may be purchased at the box office or online at:

<http://www.thebarnplayers.org/tickets>